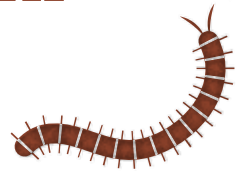


# Make an Mini-Beast Hotel



## You will need:

- ◇ Plant pots
- ◇ Pinecones
- ◇ Twigs
- ◇ Fallen tree bark
- ◇ Hollow plant stems
- ◇ Bricks
- ◇ Stones

Bug hotels attract and shelter mini-beasts that are great for the garden such as ladybirds, lacewings and spiders. A whole lot of other insects like beetles and butterflies can also make use of these homemade habitats.

They are fun and easy to make, you just need to spend some time collecting materials.

Places along the canal such as Duke's Drive and Bridgewater Park are great places to hunt for materials to build your hotel.

You can use pinecones, twigs, fallen tree bark, hollow plant stems, bricks, stones & plant pots. Pile everything up and make sure that the plant pots are on their side, fill them with pinecones and sticks to create a perfect hiding place for the little creatures in your garden.

You may even get birds visiting your hotel to pick a free meal or two.

