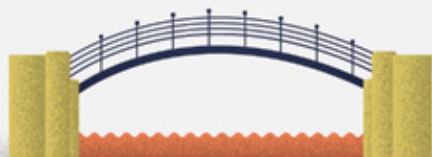
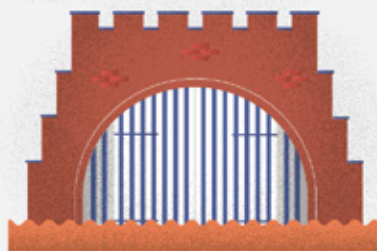


THE BRIDGEWATER CANAL IN SALFORD

LET'S PLAY I SPY...



EST. 1761



WELCOME TO THE BRIDGEWATER CANAL

There is so much to see beside the Bridgewater Canal in Salford.

Today it is busy with wildlife and nature but look closely and you can still see traces of its industrial past – some things you can see go all the way back to 1761 when it first opened.

Get your explorer's hat on and set off on a journey of discovery along this intriguing waterway to spot as much as you can. On each page there are things to discover, so get ready, steady, go!



Tick the box when you find the object



BARTON AQUEDUCT POCKET PARK

Get up close to history with the remains of the first Barton stone aqueduct from way back in 1761.

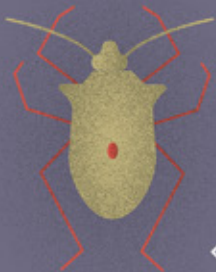
Can you spy the stonemason's marks on the stone blocks? The marks are the signatures of men that made each stone – imagine them tapp tapp tapping all day long. Look up high above the Manchester Ship Canal to see the Barton Swing Aqueduct which carries the Bridgewater Canal over to Trafford – if you're really lucky you might see it swing. What other treasures can you find here?



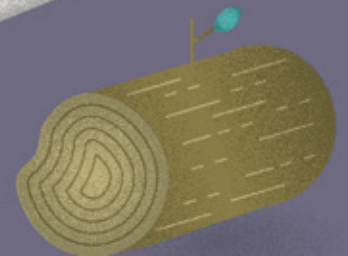
◇ Bat Box ◇



A Reflection
A Reflection



◇ Seed Pod ◇



PATRICROFT TO WORSLEY (PART 1)

Between Hall Bank at Patricroft and Worsley Village there is so much to see.

Eyes at the ready – but you might need to be quick to see some things! The electric blue flash of a kingfisher as it speeds past can be even faster than a train whizzing across the railway bridge at Patricroft.



Orange Water



Cobbles



PATRICROFT TO WORSLEY (PART 2)

Where the Bridgewater Canal begins at Worsley Delph is also the start of a massive underground canal system that carried 'Starvationer' boats to the coal seams.

Can you spot the entrance to the coal mines at the Delph? This was once a busy, noisy and dirty place with boats carrying thousands of tons of coal coming in and out of the mines every day. Can you imagine such a place?

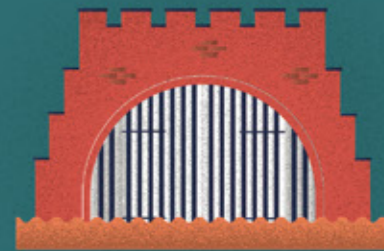
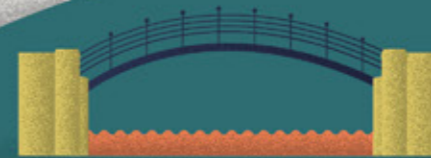
Dry Docks



Steps to Water



Mooring Ring

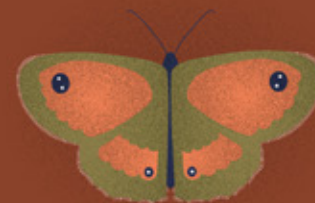


DUKE'S DRIVE, MONTON

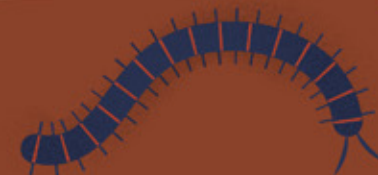
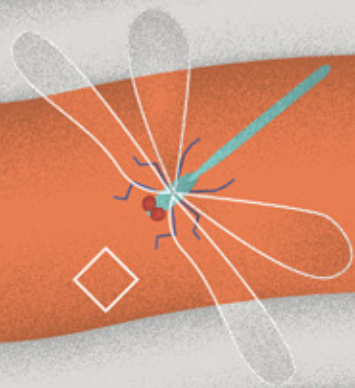
The meadows and trees of Duke's Drive are full of life – from fungus to squirrels, magpies and millipedes.

Take the time to listen, watch and explore – you'll find a whole new world of wildlife right next to the canal.

◇ Pond



Pinecone ◇



Steps ◇



Fungi ◇



BRIDGEWATER PARK, BOOTHSTOWN

Get your wellies on and
wind your way through
this natural woodland.

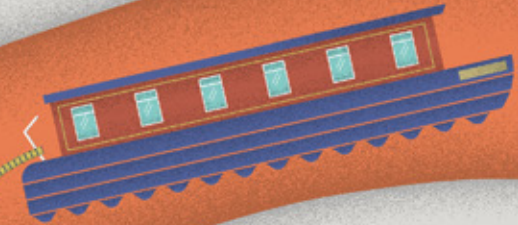
Be brave – head down secret paths,
look under leaves, search for patterns,
creatures and colours. There's so much
to see if you look close enough.

◇ Long Grass

◇ Thorn



◇ Mud



◇ Pile of Sticks



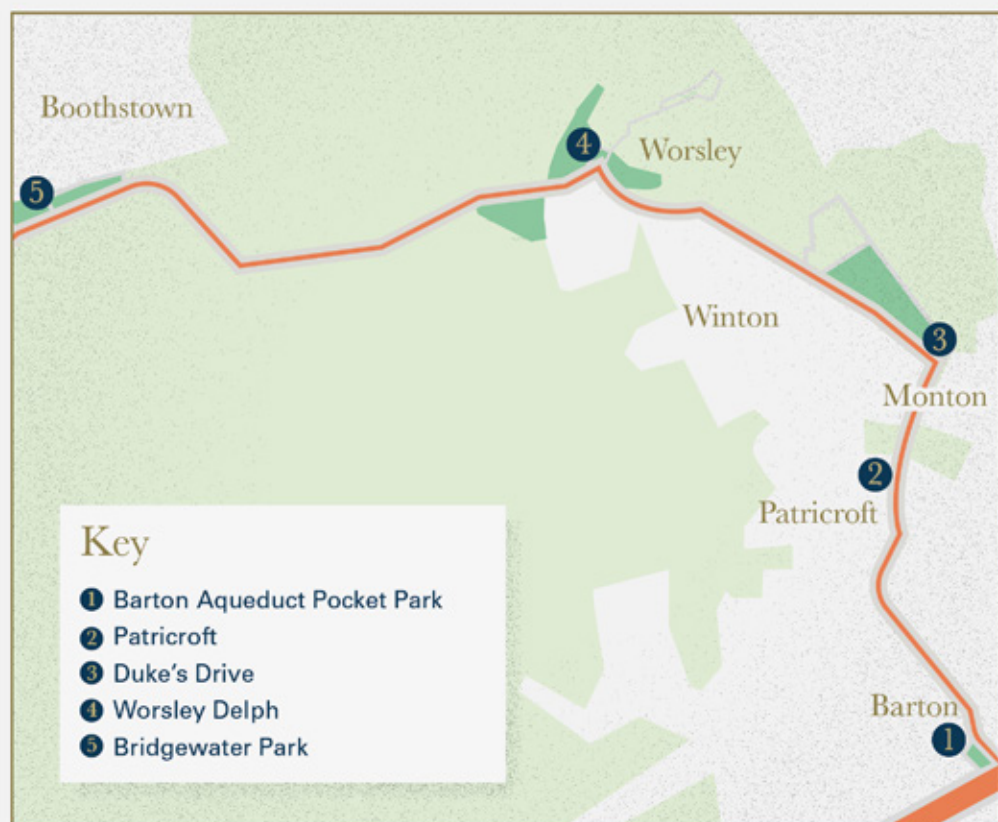
Stone



Rough Bark



FINDING YOUR WAY



GET IN TOUCH

bridgewatercanal@salford.gov.uk

f Est1761 🐦 @SalfordCanal

Download more Bridgewater Canal activities at www.est1761.org/trails

Design by Altogether

EST1761.ORG

Salford City Council

